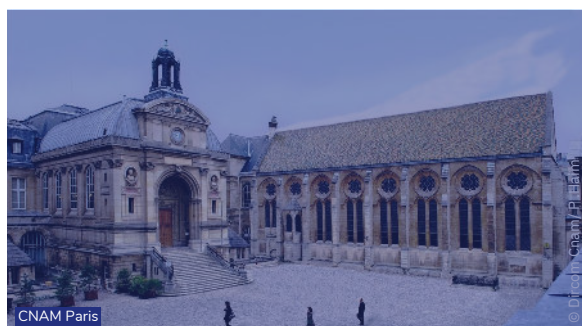


# THE RESEARCH CHAIR IN PHILOSOPHY AT THE HOSPITAL

## CNAM Humanities and Health Chair 2022-2023 Activities



CNAM Paris



Séminaire doctoral de la Chaire



Hôpital Sainte-Anne Paris



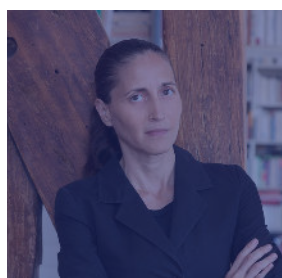
Séminaire doctoral de la Chaire

Since January 2016, the Chair in Philosophy at the Hospital has expanded its scope, working with various hospitals and care facilities. It is currently working with the GHU-Paris, Psychiatry & Neurosciences, which includes the Parisian psychiatric institutions of Sainte-Anne, Maison Blanche, and Perray-Vaucluse.

This **hospital and academic chair**, linked to the Humanities Chair of the Conservatoire National des Arts et Métiers (CNAM), is headed by philosopher and psychoanalyst Cynthia Fleury. Its aim is to place ethics at the heart of healthcare decisions and practices by anchoring them in the reality of contemporary hospitals.

The Research Chair in Philosophy at the Hospital is a **program dedicated to teaching and research, training and certification, as well as experimentation and deployment**. It is designed to combine theory and practice by working with caregivers, patients, students, healthcare system stakeholders, as well as the general public.

We operate as **"Creative Commons"**. In this way, the work produced by the Chair in the field of human sciences is made freely available, making the hospital an open place for the exchange and circulation of knowledge. In doing so, the Chair strives for an **effective alliance between the humanities and health to better imagine the future of shared care**.



« Each hospital can thus establish a Research Chair in Philosophy dedicated to education and research. Each School of Medicine could develop a Patients' University aimed at training patient experts and promoting reciprocal teaching among healthcare professionals; each hospital could entrust patients with the task of managing and organizing a specific healthcare service. »

### Cynthia Fleury

Professor and Chair of Humanities and Health at the Conservatoire National des Arts et Métiers, Research Chair in Philosophy at the Hospital at the GHU-Paris, Psychiatry & Neurosciences.

# OUR RESEARCH TOPICS, TRAINING AND EXPERIMENTATION

Drawing on various disciplines from the medical humanities, the Chair aims to gain a more specific understanding of the transformations that weaken our contemporary landscape: systemic flaws, medical exceptions, dynamics and models of societal collapse, and areas of vulnerability. Research is structured around five major topics that contribute to the **understanding of our common and specific vulnerabilities**.

## Resilience and Clinical Development

As the South and North worlds converge on the common experience of the collapse of economic models and social and ecological transitions, **the model of international development should be reviewed through a clinical perspective**, centered on local and systemic approaches to vulnerability and capacity.

## Nature and Heritage in Health

While the West was built on the ontological and epistemological rupture between nature and culture, this dualism now appears largely outdated. Holistic approaches to health, interactions between health and the environment, the breaking down of barriers between cities and hospitals and the proliferation of therapeutic gardens all bear witness to **the healing and even resilient function of nature and heritage**.

## Connected Health and Artificial Intelligence

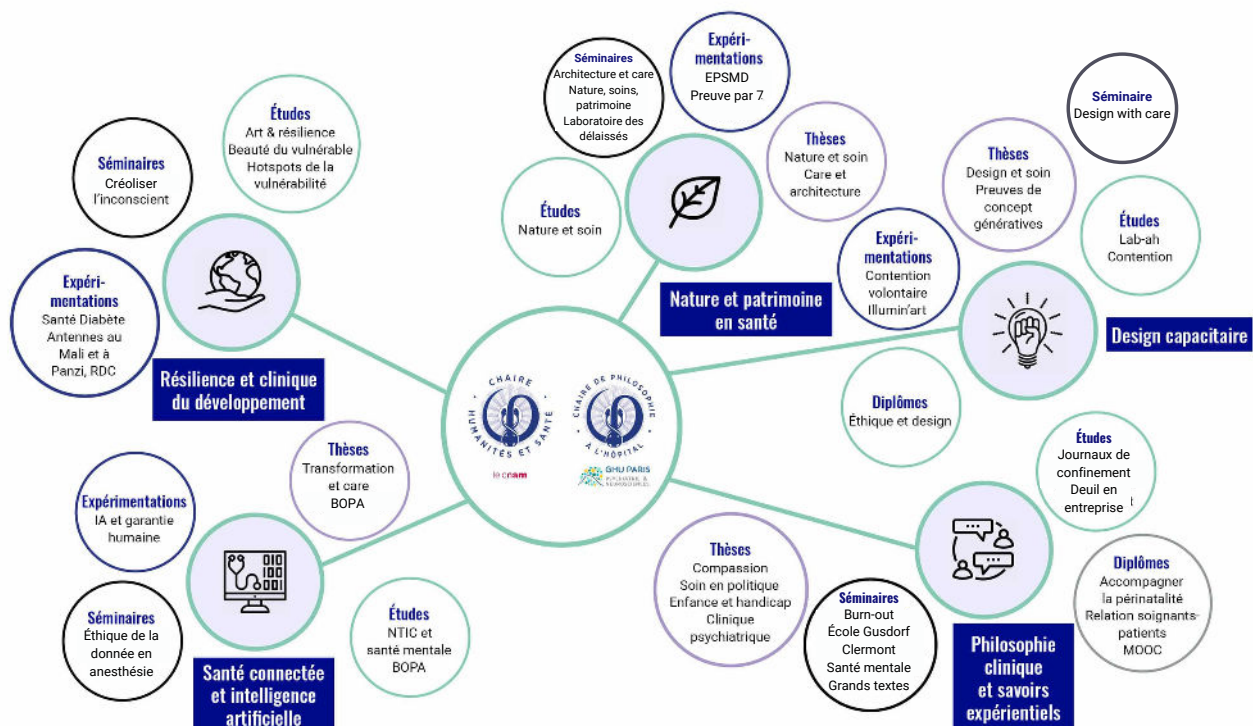
From stem cells to telemedicine and robotics, innovation in healthcare is leading to the emergence of predictive, preventive, personalized, participative, and precise medicine. These innovations nevertheless raise numerous **social and ethical issues** regarding the need for a guaranteed human dimension to medical decisions, the practice of contemporary medicine, and the inalienable patient rights.

## Clinical Philosophy and Experiential Knowledge

Caution and concern define the ambivalence of a healthcare relationship and the continuous oscillation between right distance, empathy, and trust. Clinical philosophy encourages us to examine **the caregivers' human, behavioral, psychic, and psychosocial abilities**, and the way they interweave with patients' experiences and expertise.

## Capacitive Design

Often considered a tool for industrialization and mass consumption, design proves to be a **valuable vector for making our world more habitable** by relying on the effectiveness of grassroots approaches, based on individual experiences of one's own capacities.



# I. Teaching & Research: our Publications

The Research Chair in Philosophy at the Hospital trains and works with researchers in the humanities and social sciences; each of them brings a holistic, nuanced, and insightful perspective to healthcare. From philosophy and sociology to architecture, management sciences and design, the disciplines we explore are as diverse as the topics that move us. Each year, our research projects result in **publications distributed as "Creative Commons"** and made freely available on the Chair's website.

## ALREADY PUBLISHED:



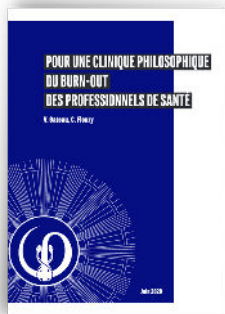
**September 2019 – Teaching Ethics and the Humanities in Healthcare in French Medical Schools: Overview and Outlook (93 p.)**

Written by Benoît Berthelier, student at the ENS, Prof. Cynthia Fleury and Nathalie Nasr, Neurologist, MD, PhD.



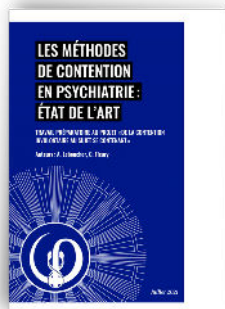
**October 2020 – ICT and Mental Health. State of the Arts (82 p.)**

Written by Marine Baconnet, health innovation project manager, under the supervision of Prof. Cynthia Fleury.



**July 2020 – The Philosophical Clinical Approach to Burnout in Professional Caregivers (62 p.)**

Written by Prof. Cynthia Fleury and Valérie Gateau, philosopher, and ethics instructor.



**July 2021 – Restraint Methods in Psychiatry. State of the Arts (144 p.)**

Written by Prof. Cynthia Fleury and Aziliz Leboucher, researcher.



**November 2021 – Narratives, Imagination and the Role of Writing in Confinement Diaries (85 p.)**

Written by Valérie Gateau, philosopher and ethics instructor, and Prof. Cynthia Fleury.



**March 2022 – Socio-Anthropological and Ethical Issues of the Augmented Operating Theatre. State of the Arts and Explorative Study (113p.)**

Written by Clément Cormi, PhD student in computer science, and Nicolas El Haïk-Wagner, PhD student in sociology, under supervision of Oriana Ciacio, MD, Prof. Cynthia Fleury and Prof. Eric Vibert.

## A COLLECTION DEDICATED TO EXPERIENTIAL KNOWLEDGE

This collection includes non-academic texts albeit supported by argumentative, illustrated and documented accounts. The texts convey experiential knowledge derived from patient journeys, life stories, patient expertise, as well as institutional life experiences as recounted by caregivers, including doctors. This collection offers **subjective, immersive knowledge that can be used for advocacy or to raise awareness.**

## LATEST PUBLICATION (APRIL 2022)



**When Narrative Becomes Care: Words and Stories of Caregivers**  
Written by Valérie Gateau, philosopher and ethics instructor.

## II. Teaching and Research: a PhD Program

The Research Chair in Philosophy at the Hospital provides supervision and support to PhD students, occasionally in collaboration with partner universities. The Chair's PhD program is designed as **a space for interdisciplinary enrichment and emulation**, where students can exchange ideas and meet the actors and caregivers with whom they work on a daily basis. Various meetings and sharing events, including an annual research seminar, are held each year. The last event took place in June 2022 at the Commanderie Hospitalière in Lavaufranche (Creuse), in a 12th century estate owned by our partner Les Sismo design studio.

### SPONSORED THESES IN PROGRESS

**Marine Baconnet** : *Organizational Transformation in the Textile Industry: Ethics Of Care as a Compass, Between a Management Model and an Attention Model*. Thesis in information and communication sciences at the CNAM (FOAP lab).

**Pierre Bidon** : *Ontogeny of Care Dynamics in a Natural Environment*. Thesis in philosophy at the CNAM (FOAP lab), in CIFRE agreement with Les Sismo.

**Thierry Billette de Villemeur** : *Disability in Childhood – From the Future of Man to the Frontiers of Humanity*. Thesis in philosophy at the CNAM (FOAP lab).

**Noémie Chataigner** : *Design as a Reflexive Intermediary: Crossed Views on Technological Innovations in Health and Care Contexts*. Thesis in philosophy at the University of Paris-Saclay (CESP lab).

**Nicolas El Haïk-Wagner** : *Opening Bodies, Repairing Lives. Sociology of Surgical Practice*. Thesis in sociology at the CNAM (FOAP lab), under doctoral contract with SHAM – Relyens Group.

**Nathalie Nasr** : *Ethics and the Decision to Perform Thrombectomy in the Acute Phase of a Stroke in Extreme Cases*. Thesis in applied ethics at the CNAM (FOAP lab).

**Marie Tesson** : *What do Contemporary Notions and Practices of Care Imply for Architecture?* Thesis in architecture at the CNAM (FOAP and Map-MAACC labs), in CIFRE agreement with SCAU architecture.

### COMPLETED THESES

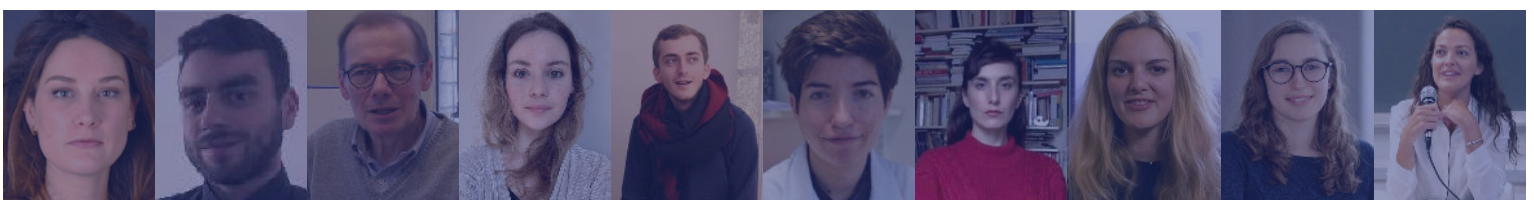
**Pauline Bégué** : *Care, in the Company of Hannah Arendt. Beyond Biopolitics and Care*. Thesis in philosophy at the ENS Ulm (CIEPFC lab) defended on December 14, 2021, at the ENS.

**Carolin Jobin** : *Providing Care Through Design: Modeling and Experimenting Generative Proofs of Concept*. Thesis in management sciences at the MINES ParisTech (PSL Research University), in CIFRE agreement with Les Sismo, defended on March 14, 2022, at Mines.

**Zona Zarić** : *The Political Meaning of Compassion*. Thesis in philosophy at the ENS Ulm (CIEPFC lab) defended on December 14, 2021, at the ENS.

### UPCOMING THESES

Thesis in philosophy about the relationship between architecture and care, in CIFRE agreement with La Preuve par 7. Expected to start in September 2023.



## III. Teaching & Research: our Seminars

The Research Chair in Philosophy at the Hospital seminars are cycles of conferences led by researchers and held in close proximity to caregivers and patients, in the hospitals. They are open to the public and held in a hybrid format (on-site / online). They contribute to **making the hospital a civic and scientific space open to all**.

### 2022-2023 SEMINARS HOSTED BY THE GHU-PARIS, PSYCHIATRY & NEUROSCIENCES

#### Seminar on Reading Major Texts:

"The Image" cycle led by Charlotte Geindre, associate professor of philosophy, PhD student in philosophy and clinical psychologist.

"Schizo-analysis" cycle led by Frédéric Baitinger, philosopher and psychoanalyst, lecturer in philosophy and practicing analyst.

**Imagination**, led by Faroudja Hocini, psychiatrist and psychoanalyst, associate researcher, and Bruno Dallaporta, MD, nephrologist, and PhD in medical ethics.

**Creolizing the Unconscious**, led by Frédéric Baitinger, philosopher and psychoanalyst, lecturer in philosophy and associate researcher.

**A Philosophical Clinical Approach to Burnout in Caregivers**, a narrative ethic and writing workshop, led by Valérie Gateau, philosopher and ethics instructor, for caregivers and hospital workers.

**Mental Health: Philosophers' Views**, led by Eva Liévain, high school philosophy teacher and Antoine de la Garanderie, high school literature teacher.

**The Laboratory of the Neglected**, in partnership with La Preuve par 7 urban planning and architecture initiative.

### 2022-2023 SEMINAR HOSTED BY THE ADAMANT DAY CARE CENTER

**Architecture and Care**, Eric de Thoisy, architect, PhD in architecture, director of research at SCAU and associate researcher.



#### COURSES LEADERS :

Frédéric Baitinger, Bruno Dallaporta, Pauline Elie, Antoine Fenoglio, Antoine de la Garanderie, Valérie Gateau, Charlotte Geindre, Loïs Giraud, Faroudja Hocini, Eva Liévain, Charlie Marquis, Marie-Elisabeth Sanselme-Cardenas, Éric de Thoisy, Cyril Touchard.

### 2022-2023 SEMINAR HOSTED BY THE CNAM

**Design with Care**, coordinated by Les Sismo design studio.



### 2022-2023 SEMINAR HOSTED AT LARIBOISIÈRE HOSPITAL

**Medical Consultation While Asleep, Ethical Reflections**, coordinated by Pauline Elie, PhD student in philosophy and law, health data ethics advisor and Cyril Touchard, MD.

### 2022-2023 SEMINARS HOSTED AT THE CHAIR

#### At the Chair's branch office in the **Établissement Public de Santé Mentale Départemental de l'Aisne**

**Nature, Care, Heritage**, developed by Loïs Giraud, hospital director, and coordinated by Charlie Marquis, Chair coordinator at the EPSMD.



#### At the Clermont-Ferrand branch

Clermont-Ferrand seminar, cycle at the **Montpiéd University Hospital in Clermont-Ferrand**, initiated by Marie-Elisabeth Sanselme-Cardenas, obstetrician gynecologist and psychoanalyst.



## IV. Training and Certification

The Research Chair in Philosophy at the Hospital offers support and joint certification for university training programs aimed at students, caregivers, researchers and professionals from all backgrounds who wish to **develop their skills through continuing education**.

### 3 INTER-UNIVERSITY DEGREES IN TOULON, CLERMONT-FERRAND AND CERGY

#### “Conscious and Unconscious Doctor-Caregiver/Patient Relationship” inter-university degree

A joint degree of the University of Clermont Auvergne and the CNAM, in partnership with the University Hospital of Clermont-Ferrand, the University of Patients-Sorbonne and the Médecine et Psychanalyse dans la Cité organization.

→ The purpose of this program is to develop participants' relational skills in the practice of their profession: to reassess the relationship between the humanistic nature of traditional medicine and cutting-edge medicine, and to understand the effects of words on the body, based on multidisciplinary approaches.



#### “Support, from Procreation to Birth” inter-university degree

A joint degree of the Université of Toulon and the CNAM in partnership with the Naître Enchantés organization.

→ The purpose of this program is to develop perinatal professionals' interpersonal and communication skills, to create trust and multi-professional cooperation with

parents and their unborn child, and to prevent psychological harm for parents and children, from conception to delivery, particularly in the case of ART.



#### “Philosophy, Ethics and Design” inter-university degree

A joint degree of the CNAM Chair in Humanities and Healthcare and the CY School of Design (Cergy University).

→ The purpose of this program is to help various actors understand the changes in an environment, as well as its vulnerabilities; to learn how to theoretically and pragmatically transform that environment in a systemic way using human sciences methodologies enhanced by design and experimentation techniques.



#### “HUMANITIES IN HEALTH” MOOC

A MOOC in partnership with the CNAM, supported by the CNAM, the CCNE and the GHU-Paris.

→ A wide range of text references, theoretical tools, and critical resources to diversify perspectives on medicine and account for the different dimensions of care. Sixty contributors, professors, and researchers who provide an orientation in the field of medical humanities and a critical and comprehensive view of the major ethical challenges currently facing medicine.

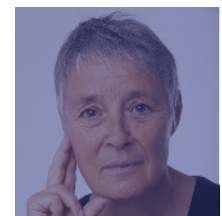


### A CLOSE PARTNERSHIP WITH THE UNIVERSITY OF PATIENTS (SORBONNE UNIVERSITY)

The **University of Patients-Sorbonne** was founded in 2010 by Professor Catherine Tourette-Turgis, clinical psycho-sociologist, professor in education sciences and researcher at the CNAM. This innovative university program aims to design and deliver graduate courses to patients who wish to turn their lived experience of illness into expertise serving the community. The program offers three degrees:

- **Training Patients, Partners, and Referents on Cancer Recovery**
- **Training course on Therapeutic Education**
- **Democracy in Health Degree: Tools for Building Health Experience**

As of March 2022, the University of Patients has acquired a Chair: the Chair in Skills and Vulnerabilities, supported by Sorbonne University, to value learning and life experiences in vulnerable situations.



# V. Experimentation and Deployment

In view of today's challenges – climate change, crisis of the democratic model, weakened organizations, emergence of artificial intelligence, etc. – It is important to **replace management with care practices based on capabilities**, in order to rethink our organizational, production and consumption models. This is the purpose of the experimentation and deployment program implemented by the Chair in Philosophy at the Hospital's, enriched by our research in the humanities.

## From Involuntary Restraint to the Subject Restraining Him or Herself: Reflection, Experimentation, Prototyping

A project led by Aziliz Leboucher, Chair project leader, Alexandre Christodoulou, MD, psychiatrist and Florence Patenotte, director of communication at the GHU-Paris Psychiatry & Neurosciences, in collaboration with Les Sismo design studio.

- Co-design of complementary devices for involuntary restraint and reflection on the conditions of their use.



## The Laboratory of the Neglected

A project developed with Patrick Bouchain, architect and urban planner, and the La Preuve par 7 teams.

- Questioning the notion of care and attention in urbanism, architecture, and landscape design (seminar, thesis and joint study field on a given territory).



## Illumin'art: Diagnosis, Prototyping and Experimentation

A project led by Cécile Antonietti, head of Development, Noémie Chataigner, PhD student in ethics and design, Rachel Even, art historian, Prof. Raphaël Vialle, orthopedic surgeon, with the support of the Art dans la Cité organization.

- Reflections on the revision of an interactive and immersive device allowing patients to choose visual and sound contents in their room or in their place of care.



## COMING SOON – Living Lab on Burn-Out and Professional Suffering Among Caregivers and Vocational Professionals

A project led by Valérie Gateau, philosopher and ethics instructor.

- A space dedicated to developing prevention and support solutions for vulnerable situations and suffering at work.

## ALSO INTERNATIONALLY...

### Training program in Mali centered on the holistic approach to care

A project conducted in partnership with NGO Santé Diabète.

- A teaching program for patients, healthcare professionals, and staff of the Ministry of Health to improve the treatment of patients suffering from chronic diseases such as diabetes.
- Creation of a digital pathway titled "Health, Food, Environment: New Challenges Linking People' Health to our Planet's Health", and development of a learning and sharing community.



### Humanities, Arts and Resilience in the Reconstruction of Women Victims of Sexual Violence in the DRC – Panzi Hospital, by Denis Mukwege, MD PhD

A project conducted at the hospital and at the Panzi Foundation, in collaboration with the University of Patients, with support from the Agence Française de Développement.

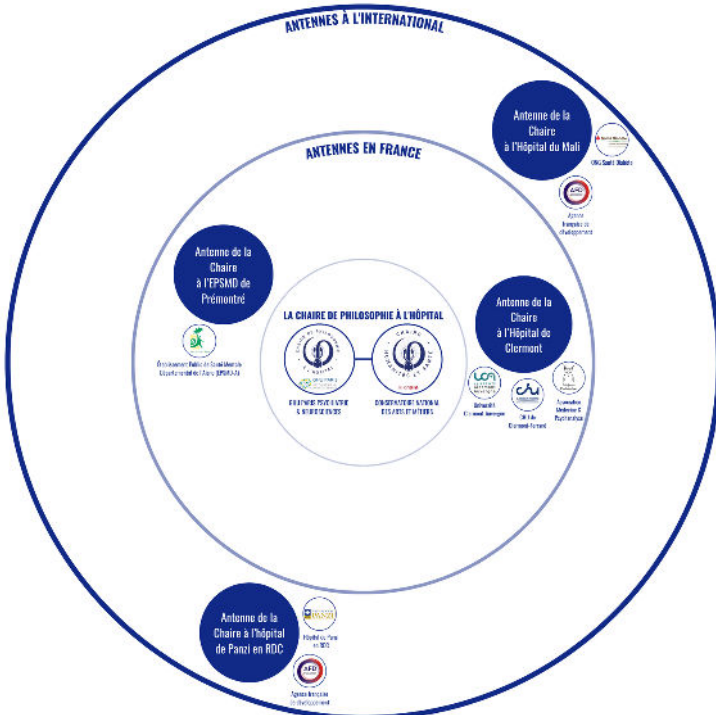
- Evaluation and proposition for the use of art therapy in the treatment of post-traumatic stress, patient expertise in the context of gender and sexual violence and narrative medicine for caregivers.



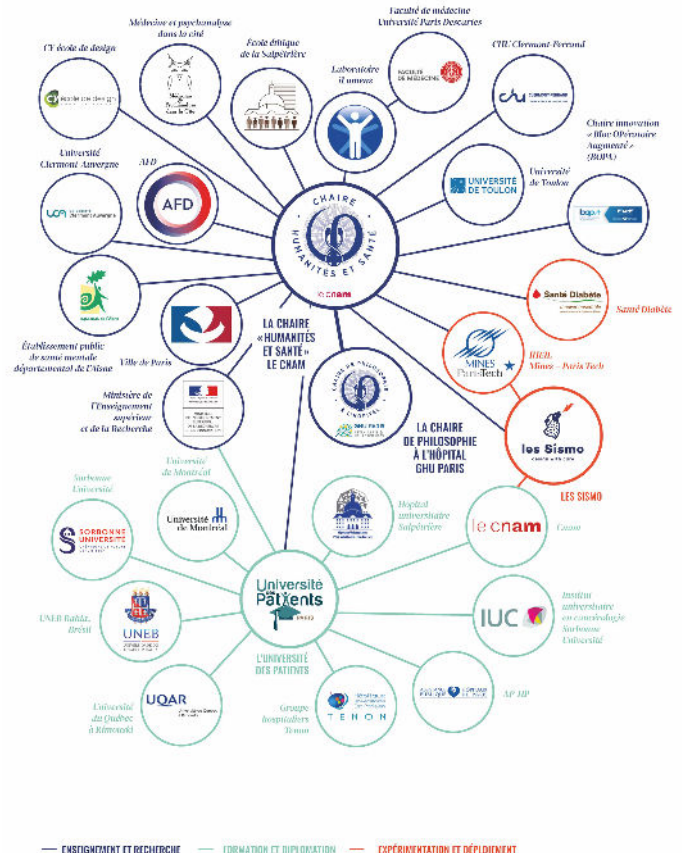
# VI. Building Bridges for Action

Opening new branches and working as "Creative Commons" are requirements and necessities for the Research Chair in Philosophy at the Hospital. It allows us to reach the heart of diverse territorial hospital environments and collaborate with healthcare professionals to create a unique, endogenous system, that might inspire others to spread the movement. It allows us to bring medical humanities to life in a very concrete way. In this context, beyond numerous collaborations with researchers, social scientists, physicians, designers and artists, the Chair is gradually expanding throughout France and abroad, through its affiliated branches:

- in **Clermont-Ferrand**, in partnership with the Médecine et Psychanalyse dans la Cité organization
- in **Préfontaine**, at the **Établissement Public Départemental de Santé Mentale de l'Aisne (EPSMD-A)**
- in **Bamako**, at the endocrinology department of the **Mali Hospital**
- in **Bukavu**, at the "Gender and Sexual Violence" department of the **Panzi Hospital (Democratic Republic of Congo)**
- coming soon at the **Bordeaux University Hospital**, with a branch dedicated to narrative medicine



## ECOSYSTEM AND SCOPE OF THE CHAIR



## THEY SUPPORT US



Under the High Patronage of the City of Paris and the Ministry of Higher Education and Research.

### CONTACTS

**Clara Otto**, Administrative and Financial Director - clara.otto@chaire-philo.fr  
**Flora Régibier**, general coordinator - flora.regibier@chaire-philo.fr  
**Nicolas El Haïk-Wagner**, project manager (development) - nicolas.ehw@chaire-philo.fr  
**Coline Periano**, project manager (seminars) - coline.periano@chaire-philo.fr

Details on all our activities are available on [chaire-philo.fr](http://chaire-philo.fr)

